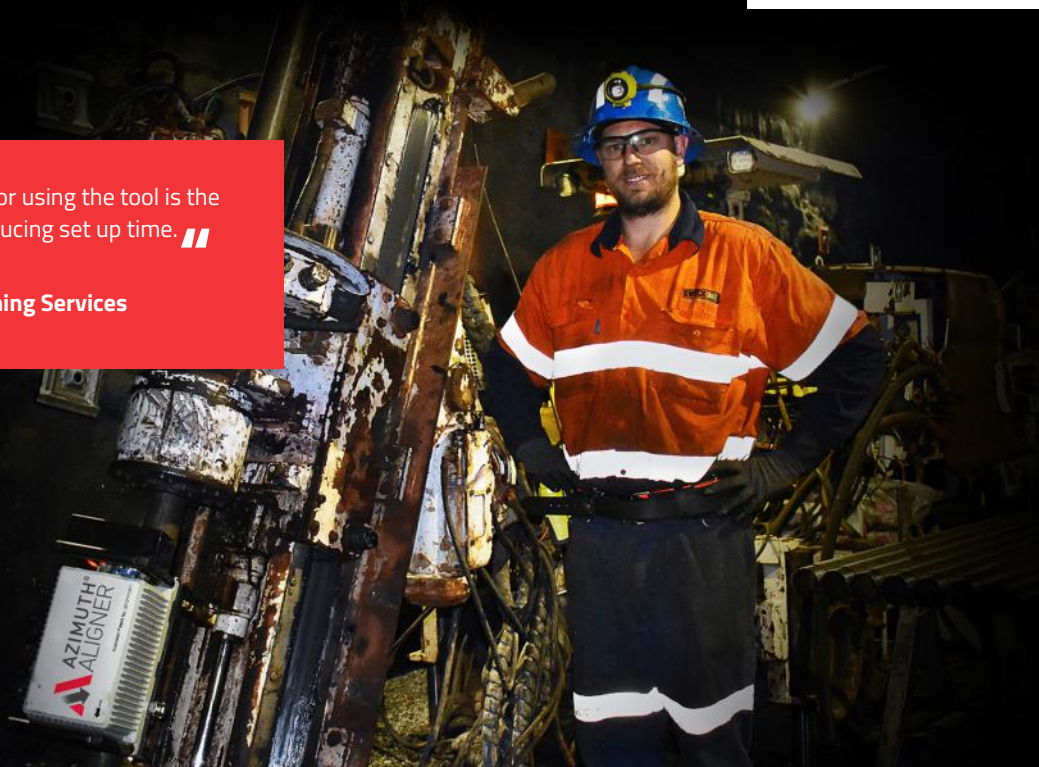


“ The return on investment for using the tool is the efficiency it provides by reducing set up time. ”

Nathan Ings
Site Supervisor, Swick Mining Services



CASE STUDY: SWICK MINING SERVICES

Swick Mining Services is an established drilling services contractor based in Australia, providing drilling services to a diverse group of mining houses in precious and base metals and bulk commodities, with operations in the US, Canada and Portugal. Since 2014, Swick has employed the Azimuth Aligner across its drilling fleet.



LOCATION: **AUSTRALIA**

INDUSTRY: **MINING**

CLIENT: **SWICK MINING SERVICES**

END CLIENT: **VARIOUS**

FOCUS: **DIAMOND DRILLING**

RIG TYPE: **SWICK**

SOLUTION: **AZIMUTH ALIGNER**

Swick Mining Services specialises in underground diamond drilling, and has a reputation for pioneering innovative rig designs that deliver improvements in productivity, safety, versatility and value.

Known as the 'Minerals Industry Drilling Innovators,' Swick is constantly seeking new innovative solutions to maximise drill rig operational efficiency.

ISSUES ON SITE

A lack of reliable drill-alignment techniques resulted in time consuming set ups, inaccurate drilling, more secondary blasting, wear and tear on loading and crushing equipment, slower throughput and production rates; which all have a negative impact on cost and profitability for both the Swick and the end client.

THE SOLUTION

Minnovare's Azimuth Aligner is patented in multiple countries worldwide, and is the most accurate drill alignment technology in the world ($\pm 2^\circ$); more than double that of the nearest competitor!

Swick began using the Azimuth Aligner in 2014, working closely with Minnovare to provide a solution in which the tool could be as mobile and versatile as the drill. Swick has since been systematically fitting the Azimuth Aligner to a number of rigs across the fleet.



THE SOLUTION

Minnovare's Azimuth Aligner (AA) is the most accurate drill alignment technology in the world ($\pm 0.2^\circ$);

The Azimuth Aligner replaced the conventional exploration drill-rig alignment methods on numerous Swick rigs, allowing them to reduce the time setting up new drill holes.

The time saving measure resulted in less down time and more time spent drilling for Swick, meaning the end client (the mine) received their core samples sooner than expected.



THE RESULTS

Initial drill rig setups were completed in just five minutes, with no assistance required from surveyors – all thanks to the Azimuth Aligner. result in poor stope performance (re-drills, over/ under-break, reduced recovery).

All of which has delivered a significant bottom line increase for both Swick and the end client (the mine).

**INITIAL DRILL RIG
SETUP TIMES WERE
COMPLETED IN JUST
5 MINS.**

**INCREASE IN
DRILLED METRES
PER SHIFT.**

**DECREASED
OVERHEAD COST.**

**REDUCED RELIANCE
ON SURVEYORS.**

**INCREASED
BOTTOM LINE.**

DRILL HOLE DEVIATION ELIMINATED.

 **AZIMUTH®
ALIGNER**

